

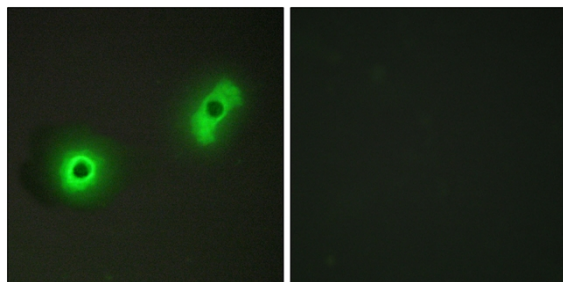


Cables2 Polyclonal Antibody

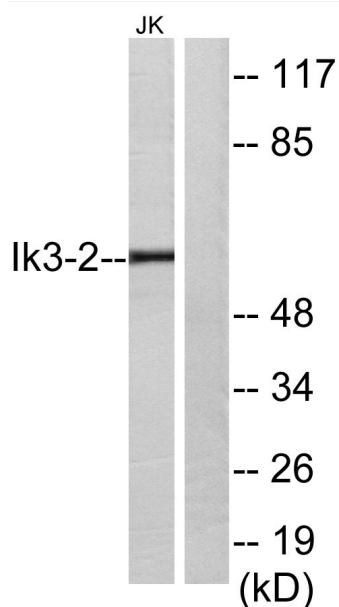
Catalog No	YP-Ab-12692
Isotype	IgG
Reactivity	Human;Mouse
Applications	WB;IHC;IF;ELISA
Gene Name	CABLES2
Protein Name	CDK5 and ABL1 enzyme substrate 2
Immunogen	The antiserum was produced against synthesized peptide derived from human Ik3-2. AA range:91-140
Specificity	Cables2 Polyclonal Antibody detects endogenous levels of Cables2 protein.
Formulation	Liquid in PBS containing 50% glycerol, 0.5% BSA and 0.02% sodium azide.
Source	Polyclonal, Rabbit,IgG
Purification	The antibody was affinity-purified from rabbit antiserum by affinity-chromatography using epitope-specific immunogen.
Dilution	Western Blot: 1/500 - 1/2000. Immunohistochemistry: 1/100 - 1/300. Immunofluorescence: 1/200 - 1/1000. ELISA: 1/10000. Not yet tested in other applications.
Concentration	1 mg/ml
Purity	≥90%
Storage Stability	-20°C/1 year
Synonyms	CABLES2; C20orf150; CDK5 and ABL1 enzyme substrate 2; Interactor with CDK3 2; Ik3-2
Observed Band	60kD
Cell Pathway	
Tissue Specificity	Eye,
Function	function:Unknown. Probably involved in G1-S cell cycle transition.,similarity:Belongs to the cyclin family.,subunit:Binds to CDK3, CDK5 and ABL1. The C-terminal cyclin-box-like region binds to CDK5.,
Background	function:Unknown. Probably involved in G1-S cell cycle transition.,similarity:Belongs to the cyclin family.,subunit:Binds to CDK3, CDK5 and ABL1. The C-terminal cyclin-box-like region binds to CDK5.,
matters needing attention	Avoid repeated freezing and thawing!
Usage suggestions	This product can be used in immunological reaction related experiments. For more information, please consult technical personnel.



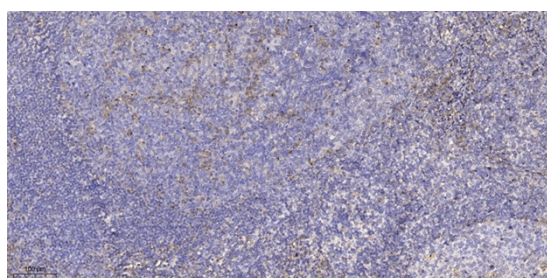
Products Images



Immunofluorescence analysis of A549 cells, using Ik3-2 Antibody. The picture on the right is blocked with the synthesized peptide.



Western blot analysis of lysates from Jurkat cells, using Ik3-2 Antibody. The lane on the right is blocked with the synthesized peptide.



Immunohistochemical analysis of paraffin-embedded human tonsil. 1, Antibody was diluted at 1:200(4° overnight). 2, Tris-EDTA,pH9.0 was used for antigen retrieval. 3,Secondary antibody was diluted at 1:200(room temperature, 30min).